

# Merkur 2

## Establishing the connection:

Press the key **G** on the RegloBeam 2. If the connection has been established successfully, **G** and one of the keys 1 to 4 light up (address of the sensor).

If **G** flashes, connection could not be established.

- Disconnect the power supply of the Merkur 2 briefly or press one of the two control keys on the sensor.
- Direct the RegloBeam 2 more exactly and directly at the sensor.

## Overview of types:

- **Merkur 2** without direction recognition
- **Merkur 2 ES** with direction recognition

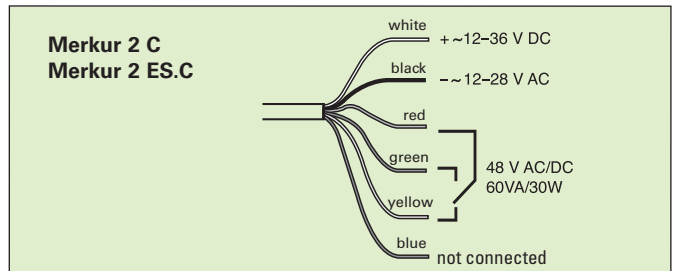
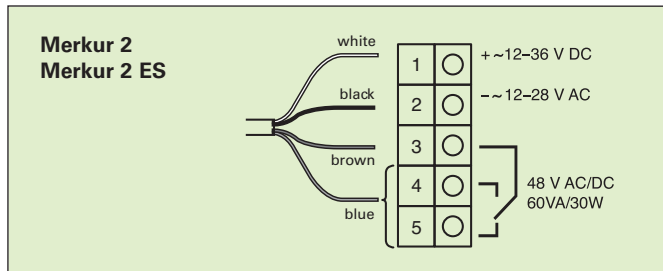


## In general:

**Flashing keys** on the RegloBeam 2 indicate that the Merkur 2 has not saved the programming.

**Constantly flashing keys** on the RegloBeam 2 indicate that the value has been accepted and saved.

## Electrical connections



## Settings

Key	Function name	Key	Function (description)
A	Manual door opening making settings	1	door opening for 15 minutes
		2	door closes when no object is in the detection area; afterwards standard operation
		3	door closes when no object is in the detection area; afterwards standard operation; configuration mode ended
C	Comfort functions	1*-6	for preset standard applications (see table below)
F4	Mounting height	1	high mounting (3 - 4 m)
		2*	normal mounting height (up to 3 m)
F8	Field geometry	1	narrow
		2*	wide
D	Field size	1-3	small field
		4-6*	medium field
		7-9	large field
B**	Direction recognition	1	OFF
		2	backwards
		3*	forward
		4	forward with MTO

Key	Function name	Key	Function (description)
F5	CTM (cross traffic masking)	1	OFF
		2*-3	low
		4-6	medium
		7-9	high
F3	SMD function (slow motion detection)	1*	OFF
		2-5	decreasing sensitivity
		6-9	constant sensitivity (level 9 contains SMD+)
F7	SMD field size	1*-3	small field
		4-6	medium field
		7-9	large field
F6	Filter for interference suppression	1	ON
		2*	OFF
F2	Output signal	1*	active: output is activated on detection
		2	passive: output is activated without detection
F1	Relay hold interval	1-3	short
		4*-6	medium
		7-9	long

## Comfort functions

Function	Key combination	C1* Standard	C2 Sidewalk	C3 Old people's home	C4 Draught-proof door	C5 Supermarket	C6 High mounting height
Direction recognition							
Merkur 2 ES	B	forward	forward	OFF	forward	forward	forward
Merkur 2	-	Not possible because this Merkur version is without direction recognition.					
Mounting height	F4	up to 3 m	up to 3 m	up to 3 m	up to 3 m	3-4 m	3-4 m
Field geometry	F8	wide	narrow	wide	narrow	wide	wide
Field size	D	6	7	6	6	9	9
Crossing traffic masking CTM	F5	low	medium	OFF	low	OFF	medium
SMD (slow motion detection)	F3	OFF	OFF	decreasing, 2 s	OFF	decreasing, 2 s	OFF
SMD field size	F7	1	1	5	1	5	1
Filter for interference suppression	F6	OFF	OFF	OFF	OFF	OFF	OFF
Output signal	F2	active	active	active	active	active	active
Relay hold interval	F1	1 s	0.8 s	2 s	0.2 s	1.5 s	1 s

\* factory settings \*\* not available with versions ES